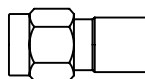


Specificatin No.	Connector	Cable type
SH170328-01	AX-500P	SC-500/50 series

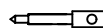
Supplied parts



Dielectric



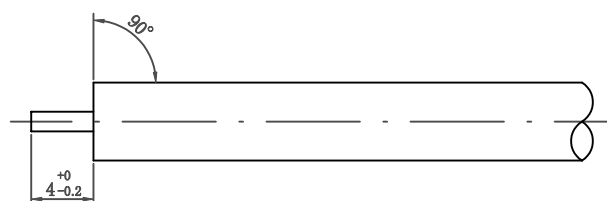
Body



Center pin

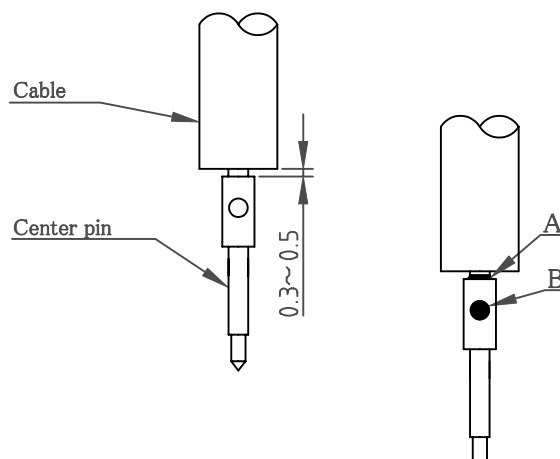
1. Strip cable

- (1) Strip center conductor 3.6mm per diagram.
Do not damage center conductor.
Cut cable end needs to be plain.



2. Soldering center pin

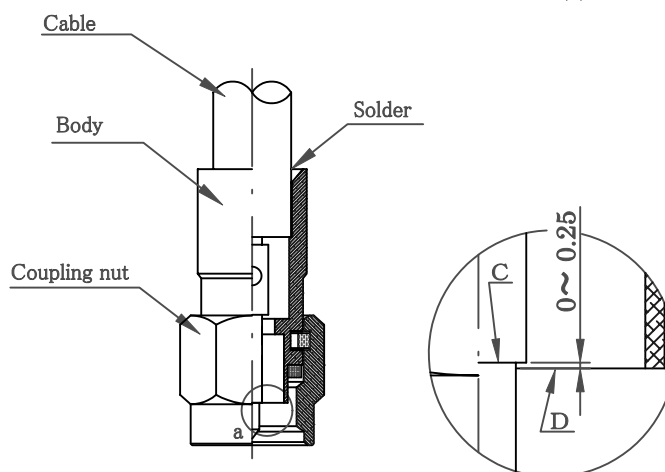
- (1) Insert center conductor of the cable into center pin until firmly fixed.
- (2) Solder center conductor of the cable and center pin.
Try to solder in a short time.
- (3) Check at part A & B, uniformly and adequately soldered.



3. Clean rosin flux

4. Soldering connector body

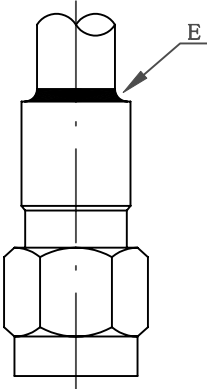
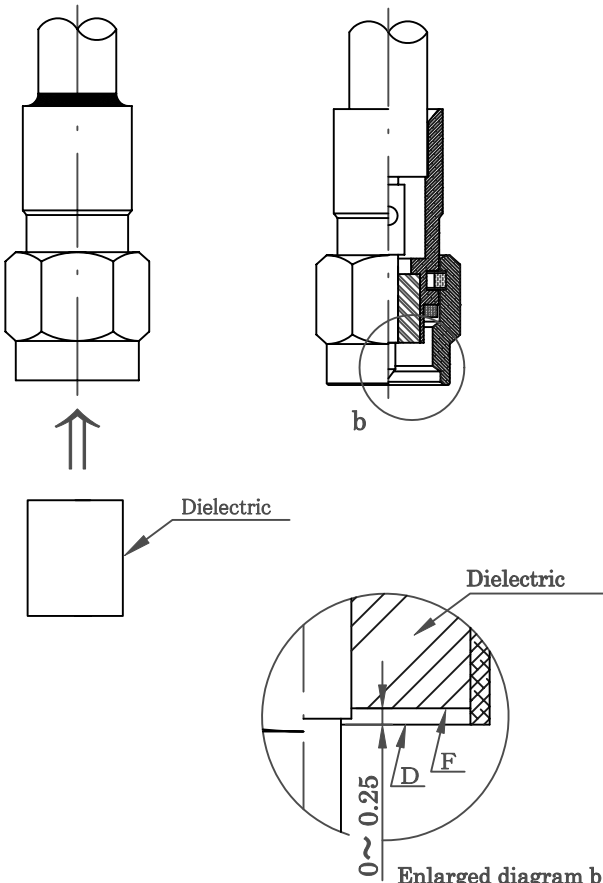
- (1) Fix position of face C of center pin and face D of connector body as enlarged diagram "a".



Enlarged diagram a

* Please try to solder in a short time.

Date	Drawn	Checked	Approved
28.Mar.2017	Kasai	Seino	Kasai

Specification No.	Connector	Cable type
SH170328-01	AX-500P	SC-500/50 series
<p>(2) Solder connector body and cable as diagram. Soldering needs to be short time and avoid excessive heat.</p> <p>(3) Inspect solder covers part E uniformly.</p> <p>5. Clean rosin flux</p> <p>6. Insertion of dielectric</p> <p>(1) Inspect inside of connector body is clean and dry before insertion.</p> <p>(2) Insert dielectric into connector body. Do not extrude face F of dielectric from face D of connector per enlarged diagram "b".</p>		 

* Please try to solder in a short time.