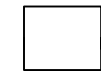


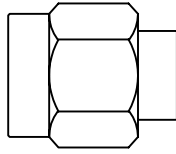


Specificatin No.	Connector	Cable type
<b>SH040617-01</b>	AX-358P/Pin AX-358P/Pin-NM	SC-358/50 series

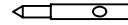
Supplied parts



Dielectric



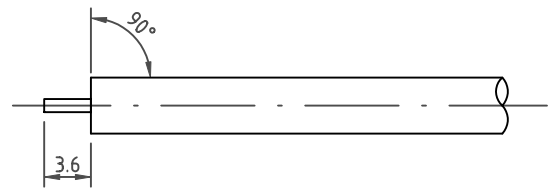
Body



Center pin

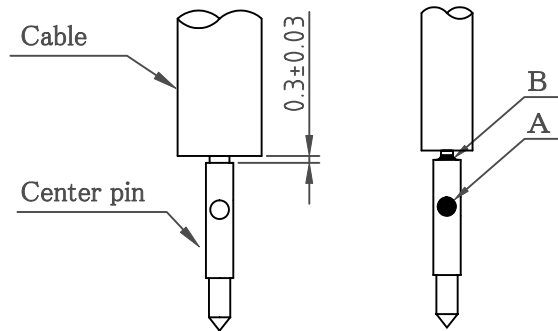
1. Strip cable

- (1) Strip center conductor 3.6mm per diagram.  
Do not damage center conductor.  
Cut cable end needs to be plain.



2. Soldering center pin

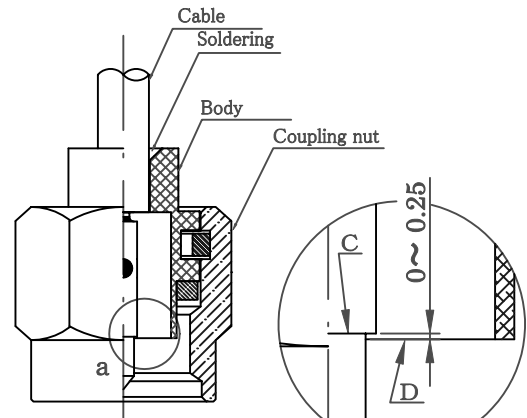
- (1) Insert center conductor of the cable into center pin until firmly fixed.
- (2) Solder center conductor of the cable and center pin. Try to solder in a short time.
- (3) Check at part A & B, uniformly and adequately soldered.



3. Clean rosin flux

4. Soldering connector body

- (1) Fix position of face C of center pin and face D of connector body as enlarged diagram "a".



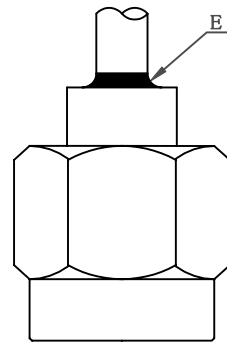
Enlarged diagram a

\* Please try to solder in a short time.

Date	Drawn	Checked	Approved
'04.6.17	Kasai	Seino	Kasai

Specification No.	Connector	Cable type
SH040617-01	AX-358P/Pin AX-358P/Pin-NM	SC-358/50 series

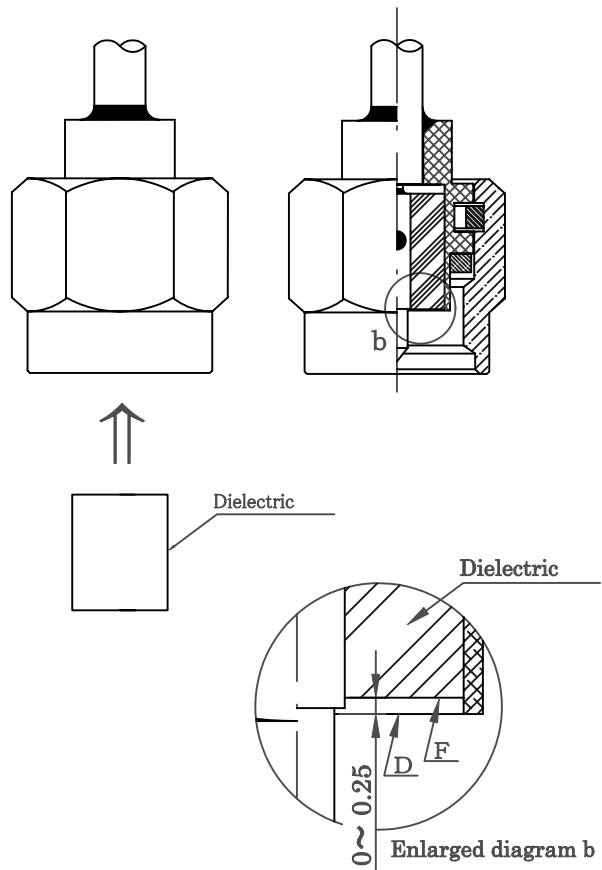
- (2) Solder connector body and cable as diagram. Soldering needs to be short time and avoid excessive heat.
- (3) Inspect solder covers part E uniformly.



5. Clean rosin flux

6. Insertion of dielectric

- (1) Inspect inside of connector body is clean and dry before insertion.
- (2) Insert dielectric into connector body. Do not extrude face F of dielectric from face D of connector per enlarged diagram "b".



\* Please try to solder in a short time.