

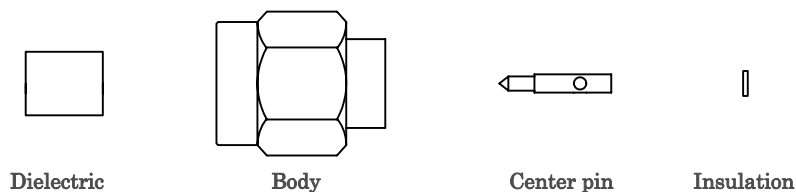


COAX CO., LTD.

SMA plug connector assembly instructions

Specification No.	Connector	Cable type
SH990629-01	AX-160P	SC-160/50 series

Supplied parts



1. Strip cable

- (1) Strip center conductor 3.6mm per diagram.
Do not damage center conductor.
Cut cable end needs to be plain.

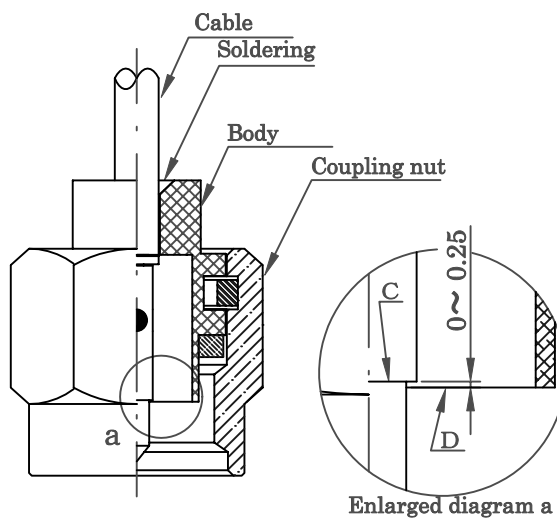
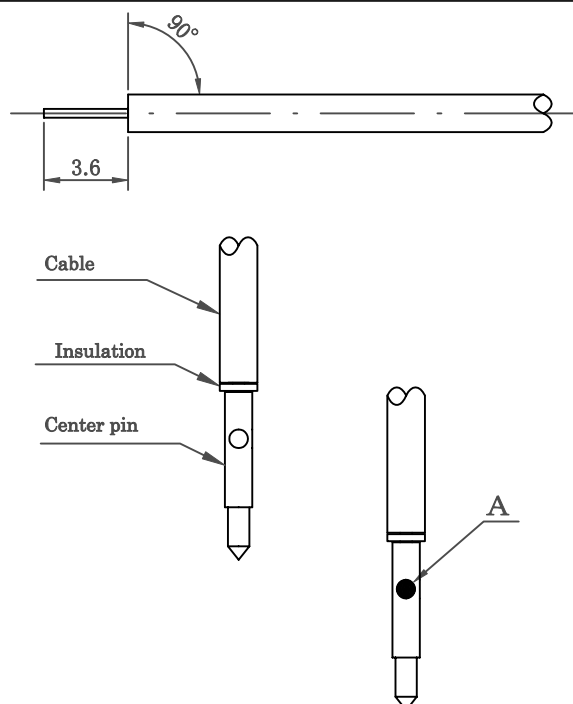
2. Soldering center pin

- (1) Insert insulation between center pin and cable per diagram. Insert center conductor of the cable into center pin until firmly fixed.
- (2) Solder center conductor of the cable and center pin.
Try to solder in a short time.
- (3) Check at part "A" uniformly and adequately soldered.

3. Clean rosin flux

4. Soldering connector body

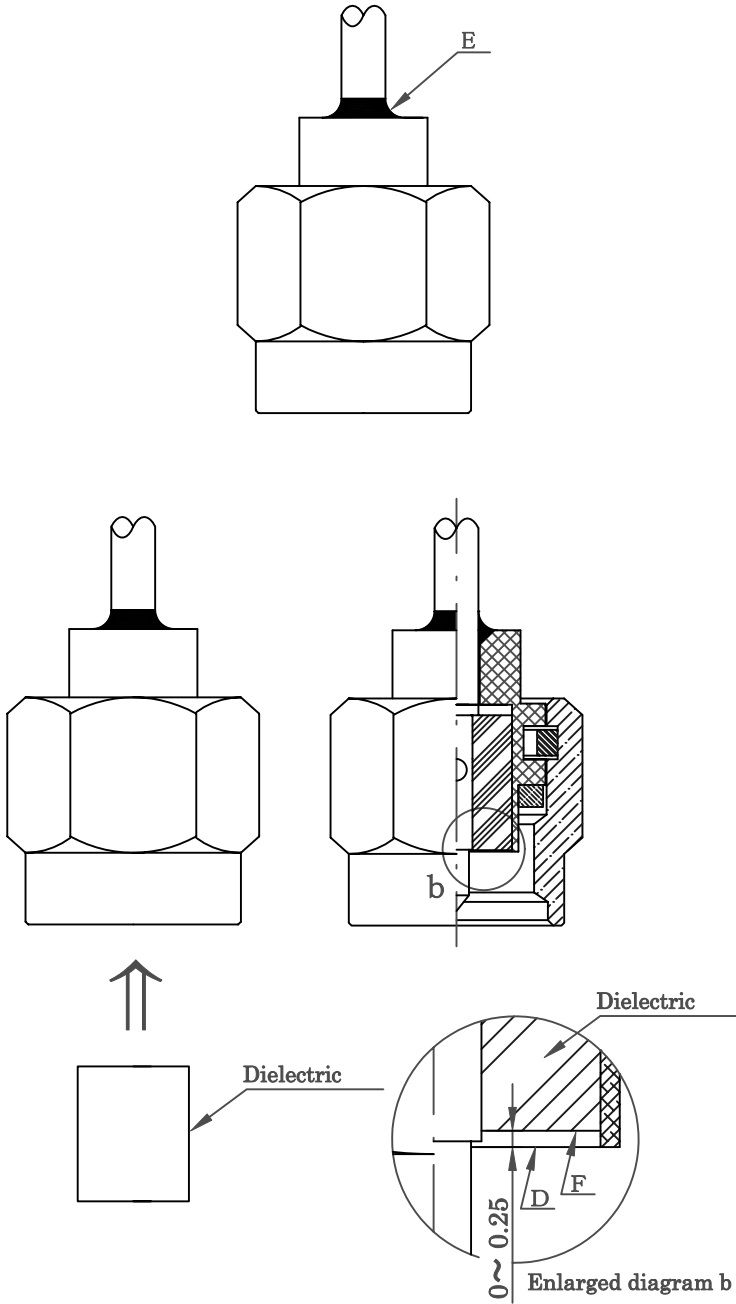
- (1) Fix position of face "C" of center pin and face "D" of connector body as enlarged diagram "a".



1/2

* Please try to solder in a short time.

Date	Drawn	Checked	Approved
'99. 6. 29	Kasai	Seino	Kasai

Specification No.	Connector	Cable type
SH990629-01	AX-160P	SC-160/50 series
<p>(2) Solder connector body and cable as diagram. Soldering needs to be short time and avoid excessive heat.</p> <p>(3) Inspect solder covers part "E" uniformly.</p> <p>5. Clean rosin flux</p> <p>6. Insertion of dielectric</p> <p>(1) Inspect inside of connector body is clean and dry before insertion.</p> <p>(2) Insert dielectric into connector body. Do not extrude face "F" of dielectric from face "D" of connector per enlarged diagram "b".</p>		

* Please try to solder in a short time.