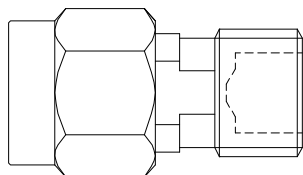


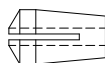
Assembly Instructions

Specification	Connector	Cable type
SH140207-01B	AX-086P/SDLS/NbTi	SC-086/50-NbTi-NbTi

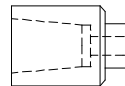
Supplied part



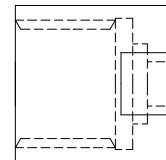
Body



Cable chuck



Chuck holder



Cramp nut

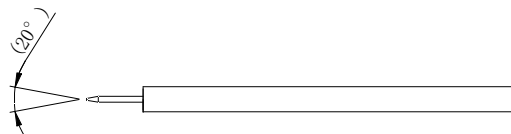
1. Strip cable

- (1) Strip cable 1.8 ~ 2.0mm per diagram.
Do not damage center conductor.
Cut cable end needs to be smooth.



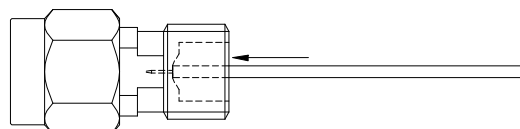
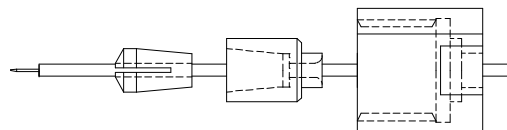
2. Trim center conductor

- (1) sharpen edge of center conductor with sandpaper per diagram.
- (2) Straighten center conductor.



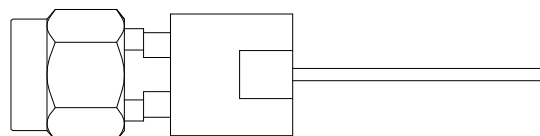
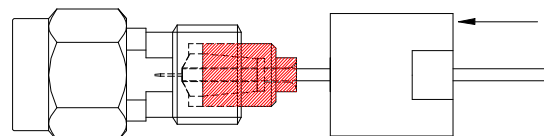
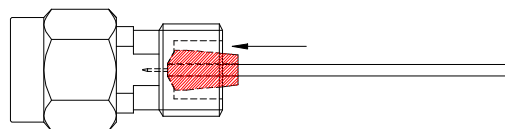
3. Insert to connector

- (1) Insert cable into cable chuck, chuck holder and cramp nut.
- (2) Insert center conductor straight and slowly into center contact of connector until firmly fixed.



4. Assemble connector

- (1) Slide cable chuck into body.
- (2) Slide chuck holder into body.
Slide cramp nut and tighten to body.
- (3) Slide clamp nut to body, and tighten clamp nut to 8 inch-pounds.



Date	Drawn	Checked	Approved
12.Apr.2015	Iwasaki	Seino	Kasai